



# SPARK-CD

## Double-sided Laser Marker Station

A Leading Global

**Professional  
Laser Marking System**

Manufacturer

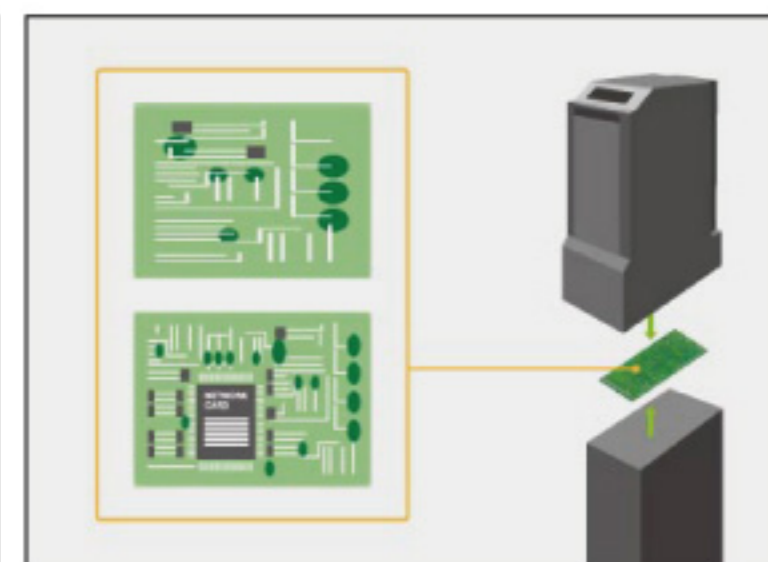
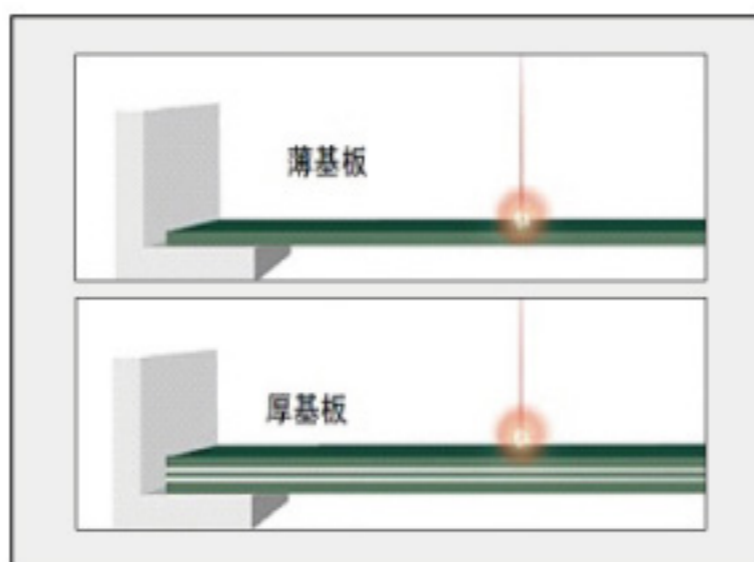
- 01 One double-sided laser marker station is more efficient than two single side stations working together: less space, low cost and fast laser marking. No need to flip and much more safe;
- 02 Z axis control system built-in, which improve the quality and reduce the time when changing the process;
- 03 Locate and Fool-proofing assisted with Jutze Vision System;
- 04 Top and bottom side work simultaneously, also independent;
- 05 Unique Jutze user interface: fast programming, simple operation;
- 06 Barcode Self-verifying: Double-marking protection and anti-wrong marking.

# SPARK-CD



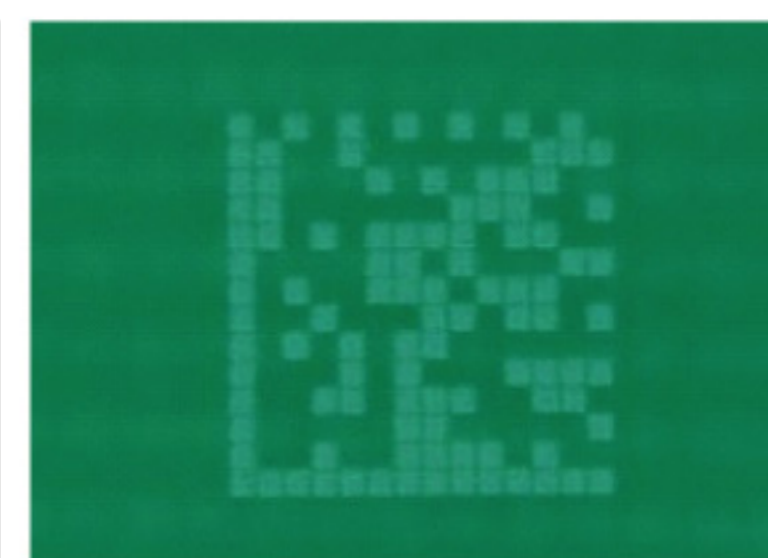
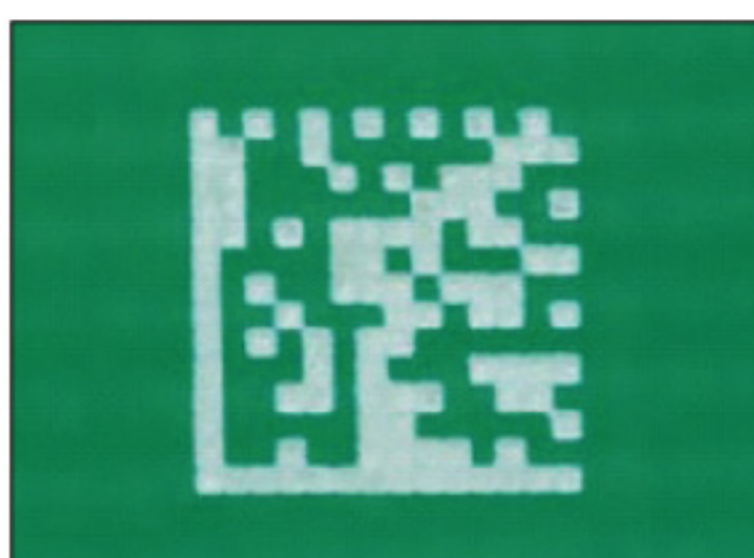
Improve the marking quality by adjusting Z axis

Top/Bottom independent control system, work simultaneously



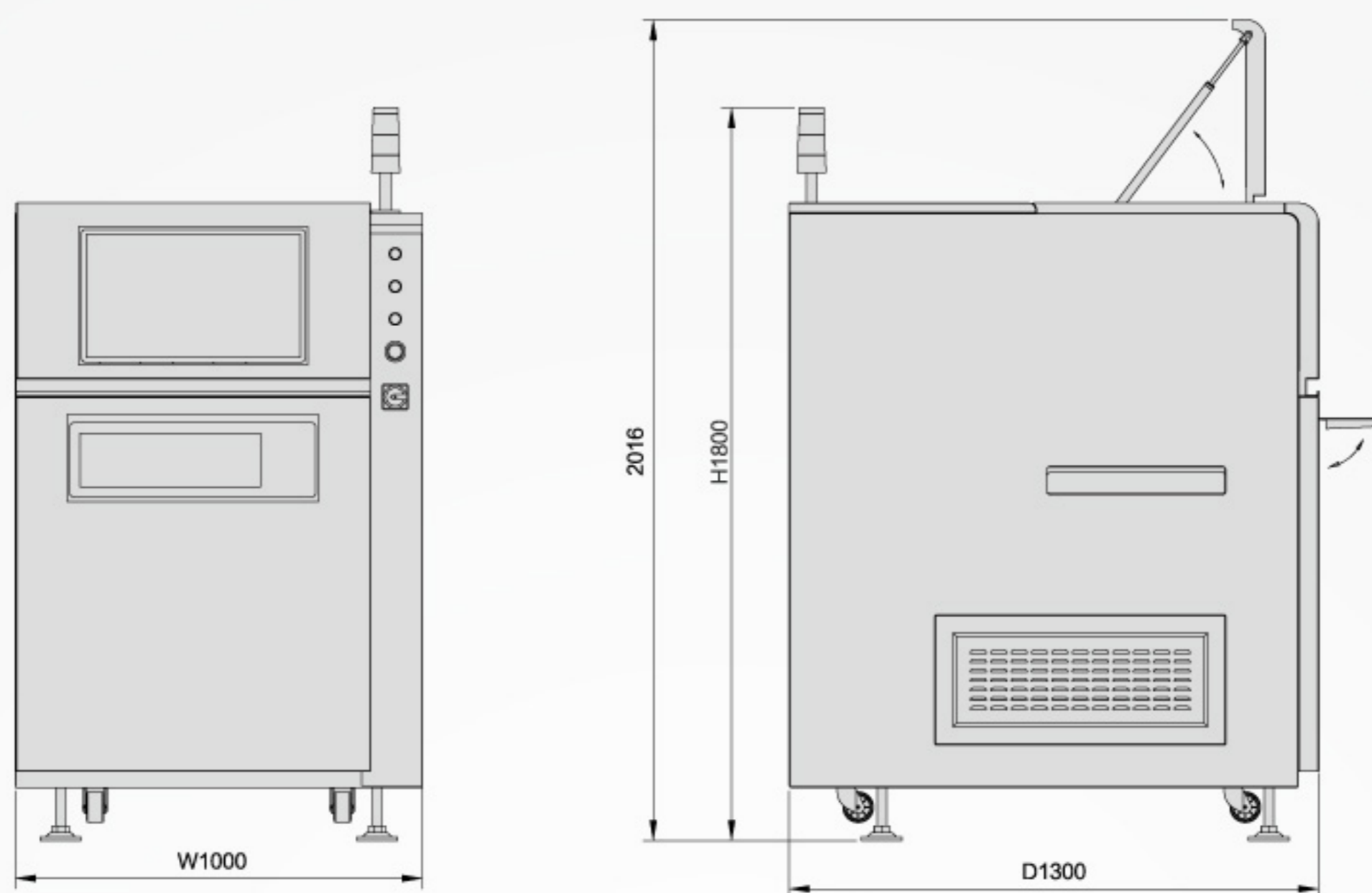
With Z axis adjustment

Without Z axis adjustment



## Product Dimension in mm

### SPARK-CD



Model		SPARK-CD
PCB	PCB Size	50x70mm ~ 470x350mm
Lane	Clearance	Upper: 30mm Lower: 30mm
	PCB Thickness	0.6mm ~ 6mm
	Transport Height	900±20mm
	Flow Direction	Left to right, Right to left ( as per customers' request )
Product Size		W1000 × D1300 × H1800mm
Weight		876KG
Laser Head	Laser Type	CO <sub>2</sub> , 5W, Forced air cooling
	Laser wave length	10.6μm
	Laser level	Class 4
	Dot Size	0.11mm
	Marking Range	55 × 55mm
	Character Type	English uppercase&lowercase letters,number,katakana,hiragana,Chinese,Symbol
	2D Barcode	QR, Micro-QR, Data Matrix, GS1 DM, PDF417(CO <sub>2</sub> only)
	1D Barcode	Code39, Code128, ITF, NW-7, JAN(EAN)/UPC
	Graphic Data	VEC, DXC, BMP, HPGL, JPEG, AI, EPS
Power Requirements		AC 220V 50/60Hz, 3.6KVA
Air Requirements		0.5MPa
Environment		Temperature: 5-40°C , Humidity: 25%-80% RH
Interfaces		SMEMA

<http://www.jutze.com.cn>

注意事项：本目录资料经仔细核对，如发现错误请及时联系本公司，使用前请务必仔细阅读《产品使用说明书》。

**炬子科技股份有限公司**  
JUTZE INTELLIGENCE TECHNOLOGY CO.,LTD

E-mail:master@jutze.com.cn  
Service E-mail:support@jutze.com.cn

**JUTZE**  
DO.TRUST

[Http://www.jutze.com.cn](http://www.jutze.com.cn)

#### Suzhou

Add: Jutze Building, No.55 Jixian Street, Suzhou Industrial Park, P.R.C  
Tel: +86-512-62988188 Fax: +86-512-62981886

#### Shanghai

Add: Room101-102,Building E,Minggu Science Park,No.7001  
Zhongchun RD, Minhang District, Shanghai, P.R.C  
Tel: +86-21-34687800 Fax: +86-21-34687805

#### Shenzhen

Add: No. 9, 8F, Yisibo Software Building, Haitian Er Road, Yuehai Street,  
Nanshan District, Shenzhen, Guangdong Province, P.R.C  
Mobile: 133 9114 5008

#### Japan

Add: KSP East 410, 3-2-1, Sakado, Takatsu-ku, Kawasaki-shi,  
Kanagawa 213-0012, Japan  
Tel: 044-712-5509 Fax: 044-712-5519