



SHINE series

Laser Marker Station

A Leading Global

**Professional
Laser Marking System**

Manufacturer

01

Very compact design with small space, easy to embed into existing lines;

02

Imported original laser head with smallest dot size on the market, maximum use of the marking range;

03

Z axis control system built-in, which improve the marking quality and reduce the time when changing the process;

04

Locate and Fool-proofing assisted with Jutze Vision System;

05

Unique Jutze user interface: fast programming, simple operation;

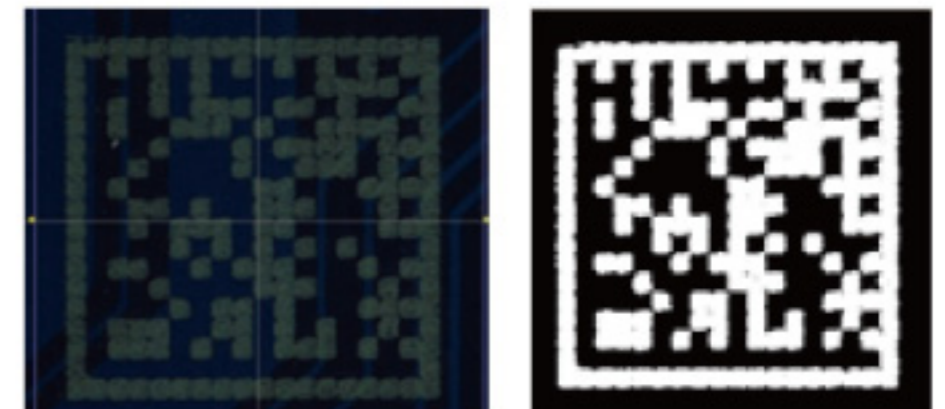
06

Barcode Self-verifying: Double-marking and Wrong-marking protection.

SHINE series

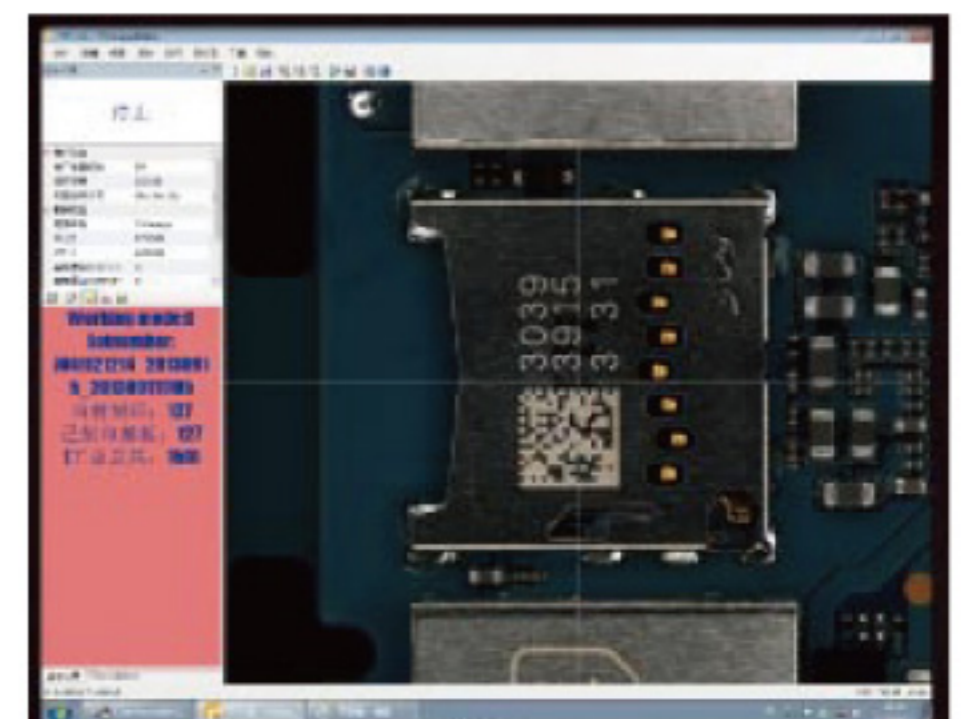


Barcode Self-verifying: Double-marking and Wrong-marking protection



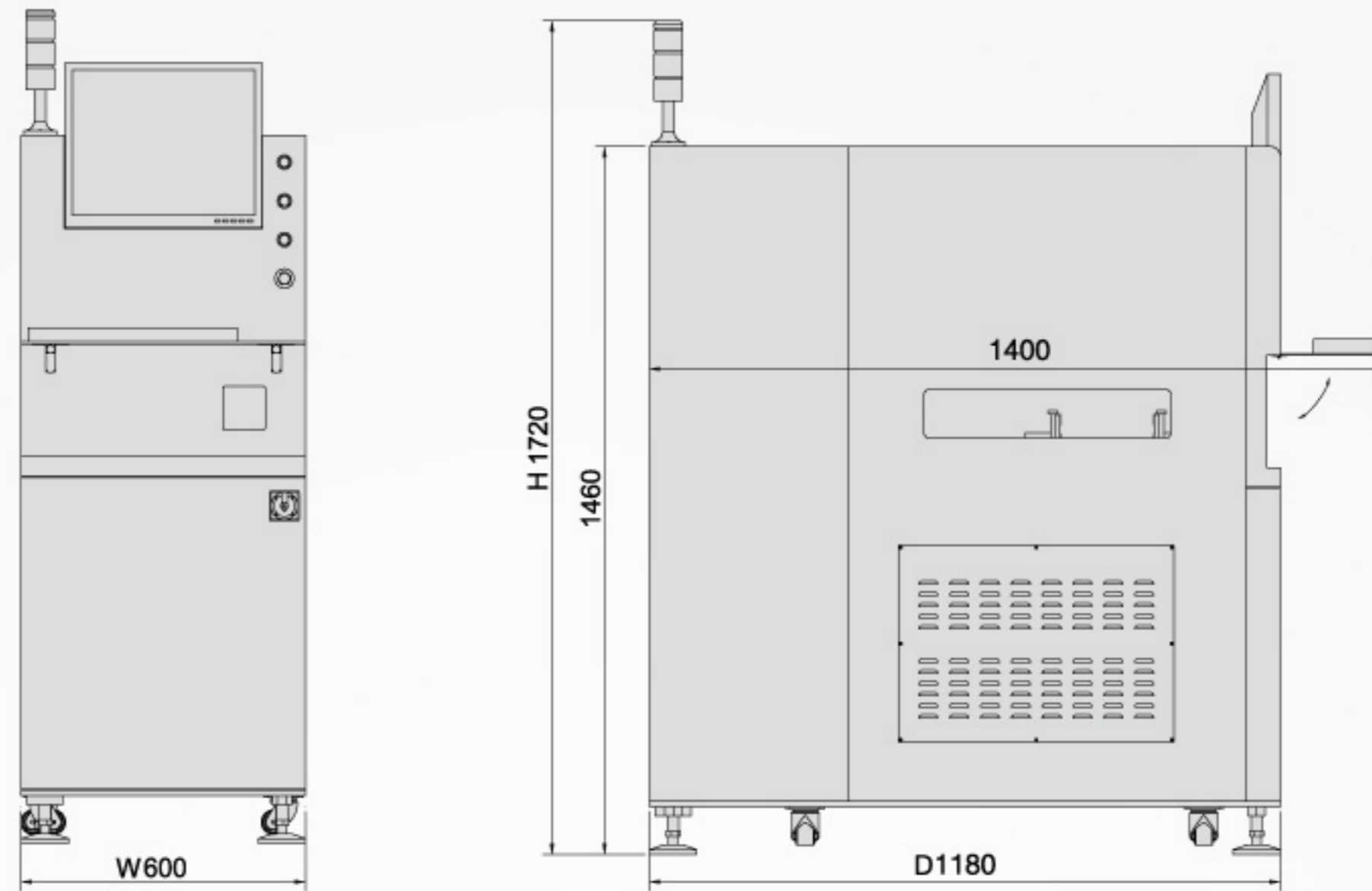
BarCode		判定参数	
条码类型	2D_DataMatr	条码长度	0
旋转角度	0	解码结果	1181165505295
B/W	White		
亮度参数			
亮度上限	80		
亮度下限	0		
颜色参数			

Jutze operation user interface



Product Dimension in mm

SHINE-C1/F1



Model		SHINE-C1	SHINE-F1
PCB	PCB Size	50x50mm ~ 270x250mm	
Lane	Clearance	Upper: 30mm Lower: 30mm	
	PCB Thickness	0.6mm ~ 6mm	
	Transport Height	900±20mm	
	Flow Direction	Left to right, Right to left (as per customers' request)	
Product Size		W600 × D1180 × H1720mm	
Weight		305KG	
Laser Head	Laser Type	CO ₂ , 5W, Forced air cooling	Fiber, 17W, Forced air cooling
	Laser Wave Length	10.6μm	1.06μm
	Laser Level	Class 4	Class 4
	Dot Size	0.11mm	0.047mm
	Marking Range	55 × 55mm	90 × 90mm
	Character Type	English uppercase&lowercase letters,number,katakana,hiragana,Chinese,Symbol	
	2D Barcode	QR, Micro-QR, Data Matrix, GS1 DM, PDF417(CO ₂ only)	
	1D Barcode	Code39, Code128, ITF, NW-7, JAN(EAN)/UPC	
Graphic Data	VEC, DXC, BMP, HPGL, JPEG, AI, EPS		
Power Requirements		AC 220V 50/60Hz, 1.8KVA	
Air Requirements		0.5MPa	
Environment		Temperature: 5-40°C , Humidity: 25%-80% RH	
Interfaces		SMEGA	

<http://www.jutze.com.cn>

注意事项：本目录资料经仔细核对，如发现错误请及时联系本公司，使用前请务必仔细阅读《产品使用说明书》。

炬子科技股份有限公司
JUTZE INTELLIGENCE TECHNOLOGY CO.,LTD

E-mail:master@jutze.com.cn
Service E-mail:support@jutze.com.cn

JUTZE
DO.TRUST

[Http://www.jutze.com.cn](http://www.jutze.com.cn)

Suzhou

Add: Jutze Building, No.55 Jixian Street, Suzhou Industrial Park, P.R.C
Tel: +86-512-62988188 Fax: +86-512-62981886

Shanghai

Add: Room101-102,Building E,Minggu Science Park,No.7001
Zhongchun RD, Minhang District, Shanghai, P.R.C
Tel: +86-21-34687800 Fax: +86-21-34687805

Shenzhen

Add: No. 9, 8F, Yisibo Software Building, Haitian Er Road, Yuehai Street,
Nanshan District, Shenzhen, Guangdong Province, P.R.C
Mobile: 133 9114 5008

Japan

Add: KSP East 410, 3-2-1, Sakado, Takatsu-ku, Kawasaki-shi,
Kanagawa 213-0012, Japan
Tel: 044-712-5509 Fax: 044-712-5519